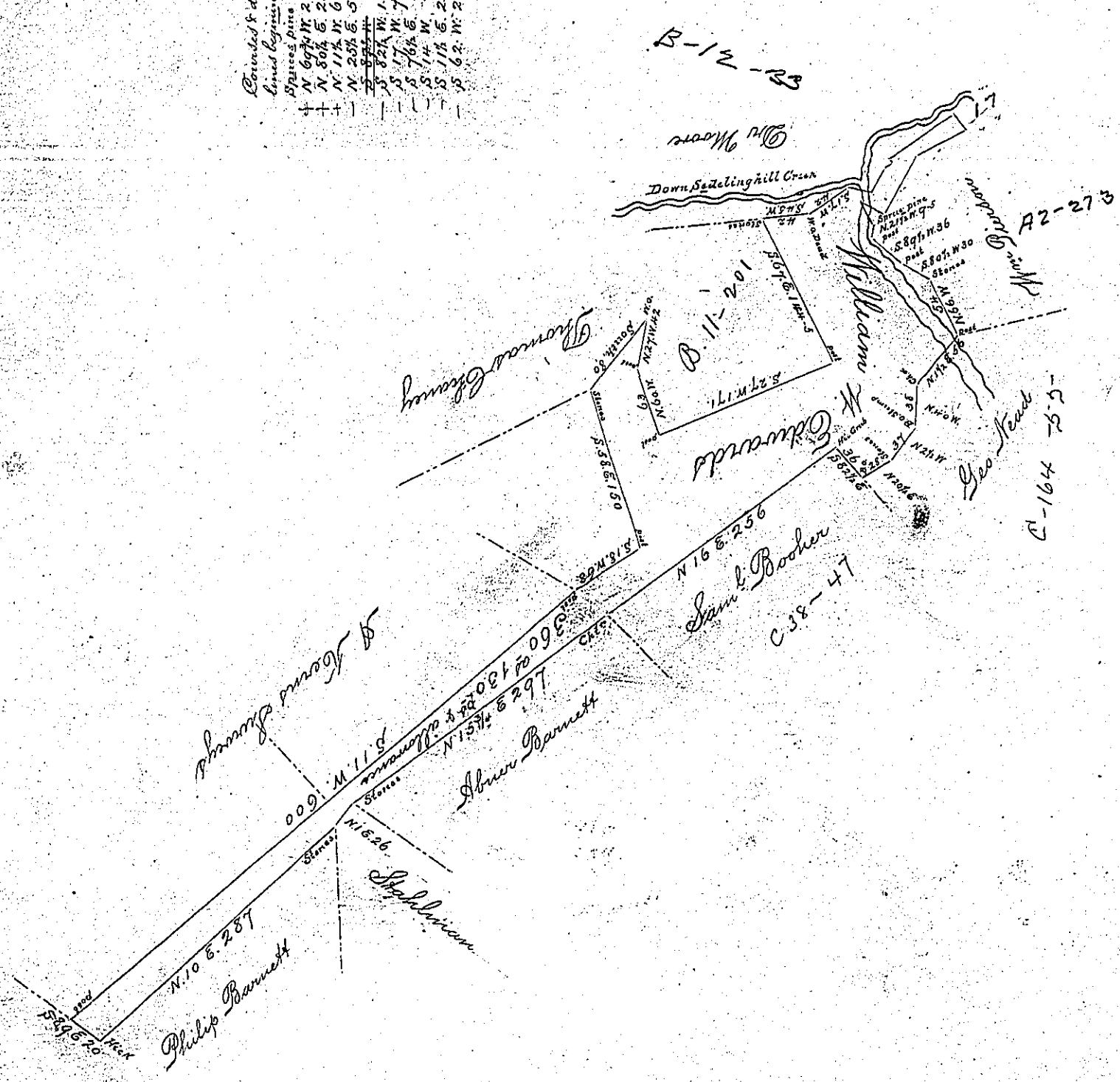


Contained & distance of 10
 lines beginning at the
 Spruce Pine
 N. 69° W. 26 Staves
 N. 80° E. 25 Staves
 N. 11° W. 60 Staves
 N. 25° E. 51 Staves
 S. 82° W. 17 Post
 S. 77° W. 12 do
 S. 74° E. 12 do
 S. 14° W. 7 Insect
 S. 11° E. 24 Post
 S. 62° W. 20 Washump



Situate in Wells & Taylor Townships Tulston County Containing 360^{ac} 130^{ps} and
 the usual allowance of Six per Cent for Roads &c. Surveyed the 24th day of October 1855 on warrant
 granted to William H. Edwards for 400^{ac} dated the 8th day of October 1855. it also includes his
 Improvement.

Andrew J. Fone C.S.

To J. Porter Brawley Esqr S. G.

IN TESTIMONY that the above is a copy of the original remaining on file in the Department of
 Internal Affairs of Pennsylvania, made conformably to an Act of Assembly
 approved the 16th day of February, 1833, I have hereunto set my Hand
 and caused the Seal of said Department to be affixed at Harrisburg, this
 fifth day of February 1891.



James W. Fata
 Secretary of Internal Affairs